

Courtesy Of Mikela Blundon Of MaxWell Polaris

\$214,900 - 206 5370 Chappelle Road, Edmonton

MLS® #E4418403

\$214,900

2 Bedroom, 2.00 Bathroom, 812 sqft
Condo / Townhouse on 0.00 Acres

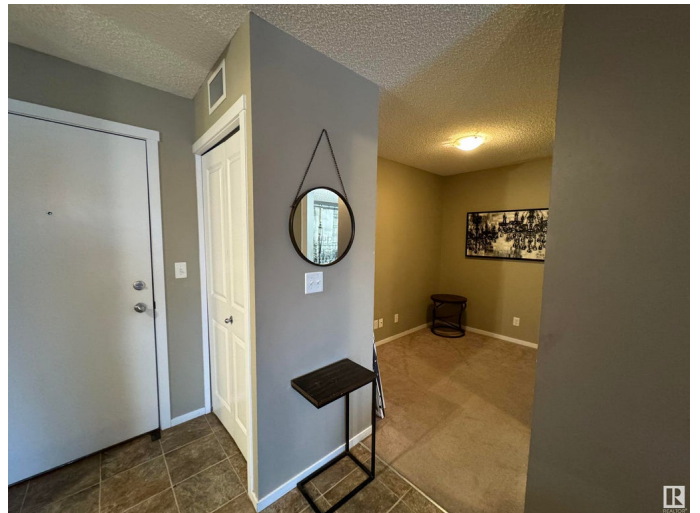
Chappelle Area, Edmonton, AB

CALLING ALL FIRST TIME BUYERS & INVESTORS! This charming 2 BEDROOM plus DEN condo offers a cozy open-concept living space that's perfect for both relaxation and entertaining. With LOW CONDO FEES and a modern layout, it's the perfect choice for easy living. The kitchen features sleek STAINLESS STEEL APPLIANCES, and the spacious den offers flexible space for a home office or cozy retreat. Enjoy 2 FULL BATHROOMS, IN-SUITE LAUNDRY and UNDERGROUND PARKING for added convenience. A large balcony extends the living space outdoors, perfect for enjoying fresh air or a morning coffee!

Built in 2016

Essential Information

MLS® #	E4418403
Price	\$214,900
Bedrooms	2
Bathrooms	2.00
Full Baths	2
Square Footage	812
Acres	0.00
Year Built	2016
Type	Condo / Townhouse
Sub-Type	Lowrise Apartment



Style Single Level Apartment
Status Active

Community Information

Address 206 5370 Chappelle Road
Area Edmonton
Subdivision Chappelle Area
City Edmonton
County ALBERTA
Province AB
Postal Code T6W 3L5

Amenities

Amenities Parking-Visitor, Patio, Secured Parking, Security Door, Sprinkler System-Fire
Parking Spaces 1
Parking Underground

Interior

Interior Features ensuite bathroom
Appliances Dishwasher-Built-In, Microwave Hood Fan, Refrigerator, Stacked Washer/Dryer, Stove-Electric, Window Coverings
Heating Baseboard, Natural Gas
of Stories 4
Stories 1
Has Basement Yes
Basement None, No Basement

Exterior

Exterior Wood, Vinyl
Exterior Features Airport Nearby, Flat Site, Landscaped, Public Transportation, Schools, Shopping Nearby
Roof Unknown
Construction Wood, Vinyl
Foundation Concrete Perimeter

Additional Information

Date Listed January 15th, 2025
Days on Market 91
Zoning Zone 55

HOA Fees	52.5
HOA Fees Freq.	Annually
Condo Fee	\$434

DATA IS DEEMED RELIABLE BUT IS NOT GUARANTEED ACCURATE BY THE REALTORS® ASSOCIATION OF EDMONTON. COPYRIGHT 2025 BY THE REALTORS® ASSOCIATION OF EDMONTON. ALL RIGHTS RESERVED. Trademarks are owned or controlled by the Canadian Real Estate Association (CREA) and identify real estate professionals who are members of CREA (REALTOR®, REALTORS®) and/or the quality of services they provide (MLS®, Multiple Listing Service®)

Listing information last updated on April 16th, 2025 at 3:32am MDT