

## **\$375,000 - 1073 109 Street, Edmonton**

MLS® #E4427154

**\$375,000**

3 Bedroom, 3.50 Bathroom, 2,070 sqft

Condo / Townhouse on 0.00 Acres

Bearspaw (Edmonton), Edmonton, AB

Pride of ownership is apparent in this spacious 2 storey condo in beautiful Bearspaw. Located across from green space & siding a peaceful pond, the location is perfect! Open the front door to a spacious entry way & down the hall to a large sunk in living area w/ gas fireplace, huge windows, loads of room for entertaining & dining area. The kitchen has a cooktop stove in the island, s/s appliances, plenty of cabinets, built in desk & eat in area. A 2 pc powder room w/ laundry complete the main floor. Upstairs is a huge primary bedroom w/ walk in closet, makeup vanity, jacuzzi tub & separate washroom. A bonus room, second bedroom, & a 4 pc bathroom complete the upstairs. The fully finished & recently upgraded basement has a rec room, family room, bedroom w/ built in shelving, full bathroom & secret door to the utility room w/ 2 furnaces (2021) & lots of storage. The private deck completes this home! Additional features: double attached garage, corner unit & water & sewer included in condo fee. Welcome home!

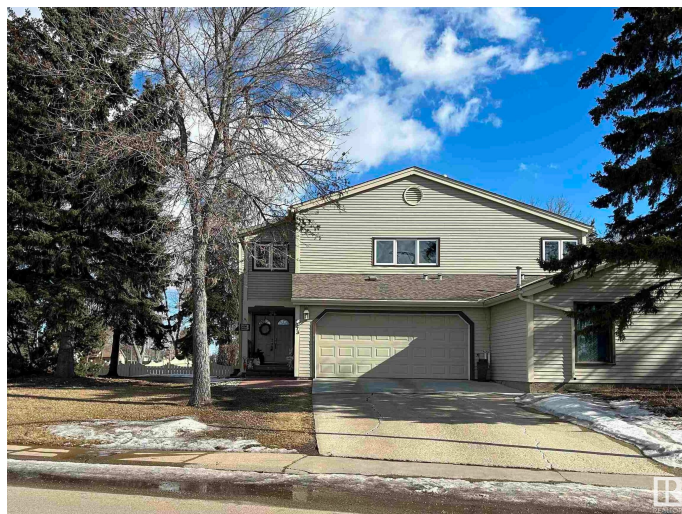
Built in 1980

### **Essential Information**

MLS® # E4427154

Price \$375,000

Bedrooms 3



Bathrooms	3.50
Full Baths	3
Half Baths	1
Square Footage	2,070
Acres	0.00
Year Built	1980
Type	Condo / Townhouse
Sub-Type	Townhouse
Style	2 Storey
Status	Active

### Community Information

Address	1073 109 Street
Area	Edmonton
Subdivision	Bearspaw (Edmonton)
City	Edmonton
County	ALBERTA
Province	AB
Postal Code	T6J 5G2

### Amenities

Amenities	Air Conditioner, Deck, No Animal Home, No Smoking Home
Parking	Double Garage Attached

### Interior

Interior Features	ensuite bathroom
Appliances	Dishwasher-Built-In, Dryer, Garage Control, Garage Opener, Garburator, Intercom, Oven-Built-In, Refrigerator, Stove-Countertop Electric, Washer
Heating	Forced Air-2, Natural Gas
Stories	3
Has Basement	Yes
Basement	Full, Finished

### Exterior

Exterior	Wood, Metal
Exterior Features	Corner Lot, Landscaped, Park/Reserve, Private Setting, Public Swimming Pool, Schools, Shopping Nearby, Private Park Access
Roof	Asphalt Shingles
Construction	Wood, Metal

Foundation                      Concrete Perimeter

**Additional Information**

Date Listed                      March 24th, 2025  
Days on Market                28  
Zoning                              Zone 16  
Condo Fee                        \$731



DATA IS DEEMED RELIABLE BUT IS NOT GUARANTEED ACCURATE BY THE REALTORS® ASSOCIATION OF EDMONTON. COPYRIGHT 2025 BY THE REALTORS® ASSOCIATION OF EDMONTON. ALL RIGHTS RESERVED.Trademarks are owned or controlled by the Canadian Real Estate Association (CREA) and identify real estate professionals who are members of CREA (REALTOR®, REALTORS®) and/or the quality of services they provide (MLS®, Multiple Listing Service®)  
Listing information last updated on April 21st, 2025 at 9:31am MDT