

Courtesy Of Loral K Walker Of 2% Realty Pro

\$159,900 - 306 11445 41 Avenue, Edmonton

MLS® #E4428956

\$159,900

2 Bedroom, 1.00 Bathroom, 908 sqft

Condo / Townhouse on 0.00 Acres

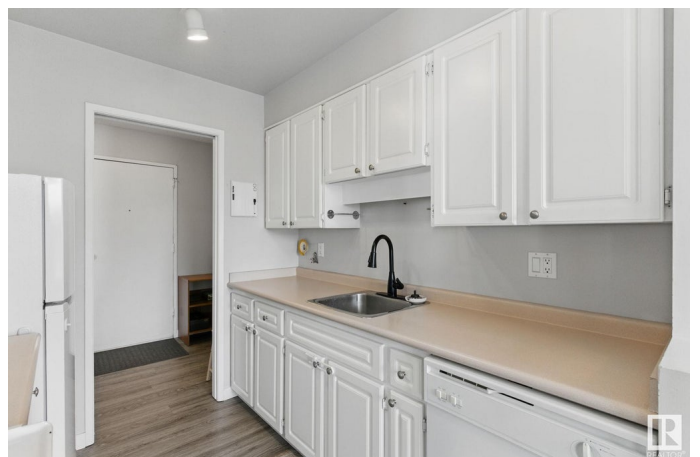
Royal Gardens (Edmonton), Edmonton, AB

Fall in love with this peaceful, bright, spacious, well kept 2 bed, 1 bath top floor, corner unit condo. You can enjoy the beautiful skyline views with tree tops and sunsets through every window or look below to the ample green space with a gazebo, benches, mature trees and lilacs! This unit also features full size, in-suite-laundry in a spacious laundry room, tons of closet storage space throughout and low maintenance vinyl plank flooring. Located in desirable Royal Gardens, this property offers quick access to the Whitemud, walking trails in ravines, and Snow Valley for skiing. Shopping (groceries, pharmacy, medicenter, dining), schools, spray parks, playgrounds and Leisure Centre are just minutes away! This complex is well managed and maintained with an on-site manager, long term neighbors and a friendly community feel. A 1 bdrm guest suite and a meeting room are available for rent. This is an excellent property to call home!

Built in 1970

Essential Information

MLS® #	E4428956
Price	\$159,900
Bedrooms	2
Bathrooms	1.00
Full Baths	1



Square Footage	908
Acres	0.00
Year Built	1970
Type	Condo / Townhouse
Sub-Type	Lowrise Apartment
Style	Single Level Apartment
Status	Active

Community Information

Address	306 11445 41 Avenue
Area	Edmonton
Subdivision	Royal Gardens (Edmonton)
City	Edmonton
County	ALBERTA
Province	AB
Postal Code	T6J 0T9

Amenities

Amenities	Off Street Parking, Deck, Detectors Smoke, Gazebo, Guest Suite, Intercom, No Smoking Home, Parking-Plug-Ins, Vinyl Windows
Parking Spaces	1
Parking	Stall

Interior

Appliances	Dishwasher-Built-In, Dryer, Fan-Ceiling, Hood Fan, Refrigerator, Stove-Electric, Washer, Window Coverings
Heating	Baseboard, Hot Water, Water
# of Stories	3
Stories	1
Has Basement	Yes
Basement	None, No Basement

Exterior

Exterior	Wood, Brick, Vinyl
Exterior Features	Golf Nearby, No Through Road, Park/Reserve, Picnic Area, Playground Nearby, Public Transportation, Schools, Shopping Nearby, Ski Hill Nearby
Roof	Tar & Gravel
Construction	Wood, Brick, Vinyl

Foundation Concrete Perimeter

School Information

Elementary Richard Secord

Middle Vernon Barford

High Harry Ainlay

Additional Information

Date Listed April 3rd, 2025

Days on Market 9

Zoning Zone 16

Condo Fee \$587

DATA IS DEEMED RELIABLE BUT IS NOT GUARANTEED ACCURATE BY THE REALTORS® ASSOCIATION OF EDMONTON. COPYRIGHT 2025 BY THE REALTORS® ASSOCIATION OF EDMONTON. ALL RIGHTS RESERVED. Trademarks are owned or controlled by the Canadian Real Estate Association (CREA) and identify real estate professionals who are members of CREA (REALTOR®, REALTORS®) and/or the quality of services they provide (MLS®, Multiple Listing Service®)

Listing information last updated on April 12th, 2025 at 3:32am MDT