

## \$275,000 - 12724-26 92 Street, Edmonton

MLS® #E4431193

**\$275,000**

5 Bedroom, 2.00 Bathroom, 1,076 sqft

Single Family on 0.00 Acres

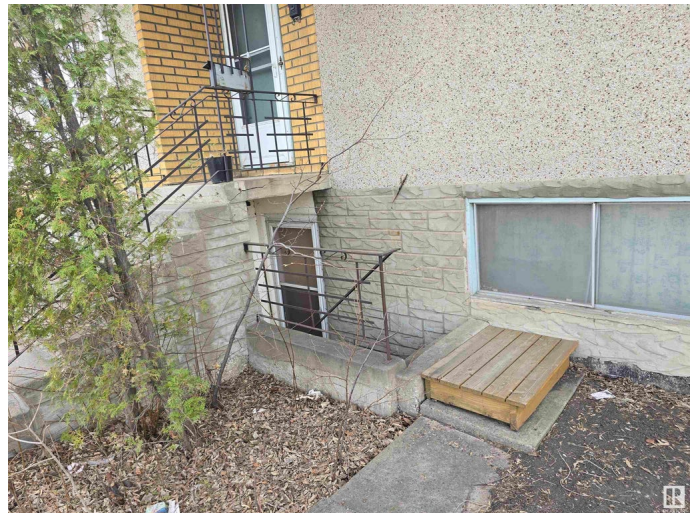
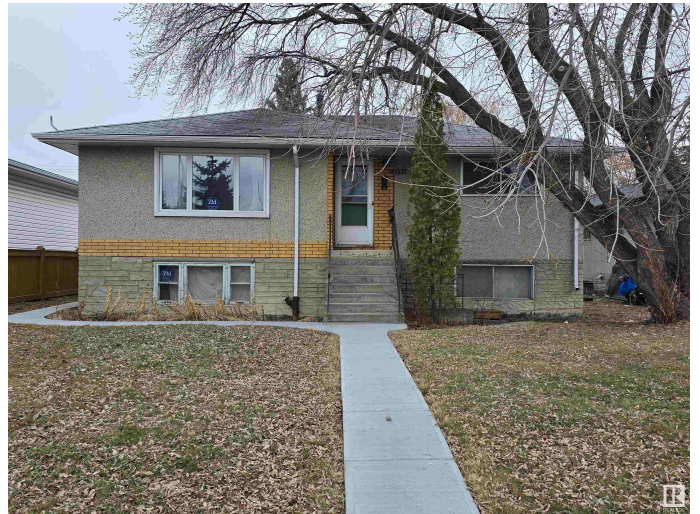
Killarney, Edmonton, AB

Up Down Duplex with separate addresses and separate power meters BUT ONLY 1 GAS METER AND 1 WATER METER. Also features 2 newer Hi efficient Furnaces, Double car 20'x22' garage, newer sidewalks all the way from the front to the back. A newer large concrete pad at the back of the garage as well. The basement has a separate entrance from outside. PLEASE NOTE: Property is being sold as is where is and needs MAJOR repairs or knock down and build new on a 49' x 140' lot zoned RF4.

Built in 1960

### Essential Information

MLS® #	E4431193
Price	\$275,000
Bedrooms	5
Bathrooms	2.00
Full Baths	2
Square Footage	1,076
Acres	0.00
Year Built	1960
Type	Single Family
Sub-Type	Duplex Up And Down
Style	Raised Bungalow
Status	Active



## Community Information

Address	12724-26 92 Street
Area	Edmonton
Subdivision	Killarney
City	Edmonton
County	ALBERTA
Province	AB
Postal Code	T5E 3R2

## Amenities

Amenities	Air Conditioner
Parking Spaces	4
Parking	Double Garage Detached

## Interior

Appliances	None
Heating	Forced Air-2, Natural Gas
Stories	2
Has Basement	Yes
Basement	Full, See Remarks

## Exterior

Exterior	Wood, Stucco
Exterior Features	Landscaped, Paved Lane, See Remarks
Roof	Asphalt Shingles
Construction	Wood, Stucco
Foundation	Concrete Perimeter

## Additional Information

Date Listed	April 15th, 2025
Days on Market	4
Zoning	Zone 02

DATA IS DEEMED RELIABLE BUT IS NOT GUARANTEED ACCURATE BY THE REALTORS® ASSOCIATION OF EDMONTON. COPYRIGHT 2025 BY THE REALTORS® ASSOCIATION OF EDMONTON. ALL RIGHTS RESERVED. Trademarks are owned or controlled by the Canadian Real Estate Association (CREA) and identify real estate professionals who are members of CREA (REALTOR®, REALTORS®) and/or the quality of services they provide (MLS®, Multiple Listing Service®)

Listing information last updated on April 19th, 2025 at 1:32pm MDT